

## L. SERVICE & WARRANTY

- Do not operate the unit with a damaged cord or plug, after the unit malfunctions, or has been dropped or damaged.
- For your convenience, record the complete model number and product name (located on the Product Identification Plate), the date you purchased the product, and attach your purchase receipt docket as proof of purchase. To ensure your product is covered by warranty, the complete faulty product together with your purchase receipt should be returned to your retailer.

### ONE (1) YEAR LIMITED WARRANTY Save This Warranty Information

EHS (International) Ltd. Guarantees this product free from defects in materials and workmanship for a period of one (1) year.

Should this unit be operated under conditions other than those recommended, at voltages other than the voltage indicated on the unit, or any attempts made to service or modify the unit, will render this **WARRANTY VOID**. The product you buy may sometimes differ slightly from illustration. This warranty is in addition to, and does not affect, your statutory rights

Should you have a problem with this product, please call our Help Desk on: (0870) 742 5021.

*This product has been manufactured to comply with EEC Directives 73/23/EEC and 89/336/EEC*

*Waste electrical products should not be disposed of with household waste. Please recycle where facilities exist. Check with your Local Authority or retailer for recycling advice.*

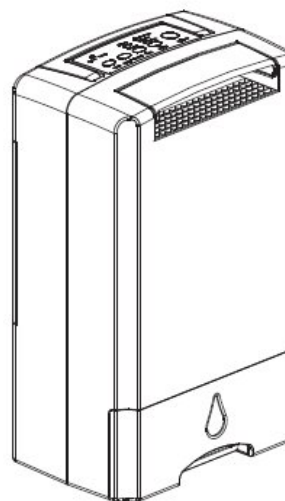


EHS, Manchester, M17 1RN

EHS 11/06



## DESICCANT DEHUMIDIFIER MODEL: PRDHZ80U



**PLEASE READ THIS INSTRUCTION MANUAL  
BEFORE OPERATING AND KEEP  
SAFE FOR FUTURE REFERENCE**

## A. IMPORTANT SAFETY INSTRUCTIONS

1. Do not operate the unit with a damaged cord or plug, after it malfunctions or has been dropped or damaged in any way. Return to an authorized service facility for examination and repair.
2. This unit should always be kept in an upright position to avoid any damage.
3. Locate the unit on a flat stable surface.
4. Check the household voltage to ensure it matches the units rated specification before operating.
5. Operate this unit in an ambient temperature between 1°C and 40°C.
6. Ensure that the air inlets and outlets are not blocked or covered.
7. Do not place the unit too close to curtains or other objects – min 40cm.
8. Do not place in direct sunlight.
9. Never place anything on top of the unit and do not cover with any kind of material while in use.
10. This product is intended for domestic and light office use ONLY and not for commercial, industrial or outdoor use.
11. To protect against electrical shocks, do not immerse unit, plug or cord in water, or spray with liquids.
12. Never unplug the appliance without pressing the "ON/OFF" key first.
13. Always unplug the unit when not in use or moving location. To disconnect from the power supply, grip the plug and pull from the power socket. Never pull by the cord.
14. Always empty the water tank before storing the unit away.
15. Close supervision is necessary when any appliance is used by or near children and pets.
16. Do not run power cord under carpeting, or cover with rugs or runners.
17. Arrange the cord away from areas where it may be tripped over.
18. Never operate or store the unit in direct sunlight.
19. To repair the unit, take to a qualified service engineer. Repairs carried out by unqualified people may cause damage to the unit or injury to persons or property and void the warranty.
20. Where possible, avoid the use of an extension cable as they may overheat and cause a risk of fire. Only use an extension cord after ensuring it is in perfect condition.
21. Do not use the unit without the air filter.

## SAVE AND READ THESE IMPORTANT SAFETY INSTRUCTIONS

## B. BS PLUG WIRING

**Wiring Instructions:** Should it be necessary to change the plug please note the wires in the mains lead are coloured in accordance with the following code:

**BLUE - NEUTRAL  
BROWN - LIVE  
GREEN AND YELLOW - EARTH**

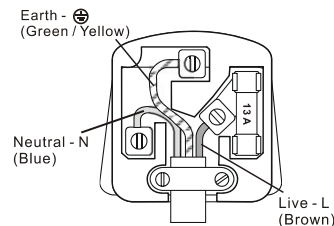
As the colours of the wires in the mains lead of this appliance may not correspond with the coloured markings identifying the terminals in your plug, proceed as follows:

1. The **BLUE** wire is the **NEUTRAL** and must be connected to the terminal, which is marked with the letter **N** or coloured **BLACK**.
2. The **BROWN** wire is the **LIVE** and must be connected to the terminal, which is marked with the letter **L** or coloured **RED**.
3. The **GREEN/YELLOW** is the **EARTH** and must be connected to the terminal which is marked with the letter **E** or  $\oplus$  or coloured **GREEN OR GREEN/YELLOW**.
4. Always ensure that the cord grip is positioned and fastened correctly.

If a **13A (BS 1363)** fused plug is used it must be fitted with a **13A** fuse. If in doubt consult a qualified electrician.

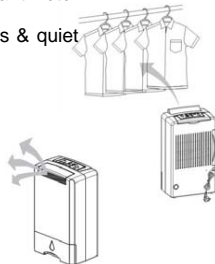
### Wiring for a 13 Amp Plug (BS1363)

Please note. The Earth Terminal is marked with the letter **E** or Earth Symbol  $\oplus$



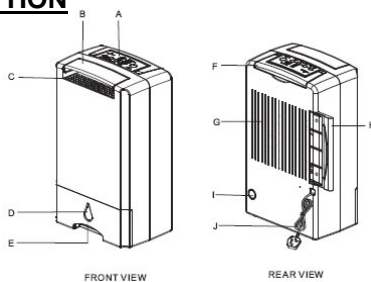
## C. FEATURES

- Compressorless dehumidifier ~ uses desiccant rotor technology
- Environmentally friendly with no harmful gasses & quiet in operation
- Moisture removal ~8 litres/day (20°C RH60%)
- Water tank capacity ~ 2.6 Litres
- Washable filter
- Built-in ioniser
- Oscillation louvre
- 3 Mode Settings – Normal, Quiet and Powerful
- Up to 8 hours timer ~ for added convenience
- Temperature range for use ~ 1°C - 40 C
- Continuous drainage
- Light & portable with carry handle
- Removable water bucket with handle



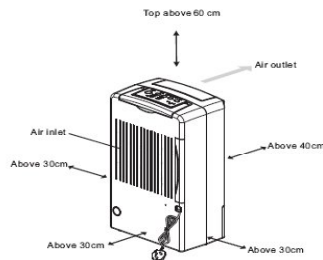
## D. PARTS DESCRIPTION

- A. Control Panel
- B. Oscillation louvre
- C. Air outlet
- D. Water indicated window
- E. Water tank
- F. Handle
- G. Air intake grill
- H. Air filter
- I. Drain hose outlet
- J. Power cord and plug

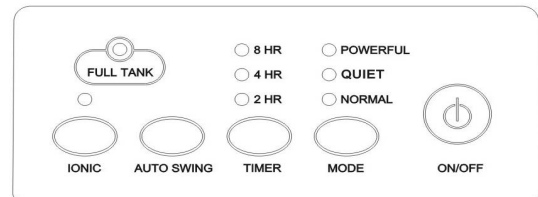


## E. UNIT SETUP

- Please ensure the unit is placed on a flat level surface
- Please ensure the unit is a safe distance away from a wall or furniture (see the diagram below)
- Keep the unit a minimum distance of 60cm away from laundry, in order to prevent any water getting into the unit.



## F. OPERATING INSTRUCTIONS



CONTROL PANEL

### 1. POWER ON/OFF BUTTON

### 2. MODE – Fan Speed Setting

This dehumidifier offers you 3 Modes for your selection. The indicator light will illuminate when the unit is operating the selected mode. When you plug in and switch on (1) the unit it will start-up in “NORMAL” mode.

Press “**MODE**” (2) button to select desired Speed. Its path cycle is: **NORMAL** → **QUIET** → **POWERFUL**

**NORMAL** – Automatic operation for a comfortable humidity between 50%~60%RH

**QUIET** – Quiet operation with low fan speed, ideal for nighttime use.

**POWERFUL** – Operation with full fan speed for maximum performance, ideal for use in laundry rooms.

When you restart the appliance it will continue to operate in last selected mode, unless unplugged from the mains socket.

**NB. Please note when your unit is switched off using the control panel the fan will continue to operate for a short period to cool the heating element. DO NOT unplug from the mains until the fan is turned off.**

### 3. TIMER

Press **TIMER** button to set the unit to run for desired amount of hours before switching off. You can only set the unit to switch off from running; you cannot delay the start time. You can set the unit to run for 2, 4 or 8 hours

If the timer is not set (no timer indicator on), the unit will continuously run until the water tank is full or preset humidity is achieved.

#### 4. IONISER

Press this button to turn the Ion generator **ON** and **OFF**. When the **LED** light is on, the appliance will release negative ions from the air outlet.

Negative Ions are beneficial in removing dust, pollen, bacteria, mildew and pet dander etc., from the atmosphere, thus improving indoor air quality.

#### 5. AUTO SWING

When operational the louvre will be open in the upward direction. Pressing the **AUTO-SWING** button (5) and the oscillating louvre will swing up and down. Pressing the AUTO-SWING again will stop the louvre at your desired position.

**WARNING: DO NOT adjust the OSCILLATION LOUVRE by hand as this will damage the mechanism.**

#### 6. FULL TANK INDICATOR

The indicator will flash and the alarm will sound when the water tank is full. Switch off the unit and unplug from the mains power socket. Empty the water tank and refit the tank into the correct position.

#### NOTE:

**This unit is equipped with a safety tip-over switch. If the unit is tipped over it will automatically switch off.**

#### 7. ENERGY SAVING SAFETY FEATURE

After 12-hours of continuous operation the heater element will reduce power from 620watts to 390watts. This is normal for this type of equipment and the logic circuit will control the operation between the two operating parameters for best performance.

### G. CONTINUOUS DRAINAGE

In Certain situations it may be more convenient to set the unit up for continuous drainage. A hose with an inner diameter of approximately 10-10.5mm is required (not supplied). A typical reinforced section of a garden hose would be suitable.

Cut out the outlet at the back of the unit (Fig 1) and push through the hose you have purchased (Fig 2).

1. Pull out the water tank and remove the rubber bung from the water outlet at the back of the water tank. Pull through the hose and connect to the outlet on the tank. Retain the rubber bung for future use.

FIG 1

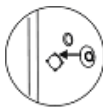


FIG 2



2. Push the tank back into the unit ensuring the hose stays connected to the outlet.

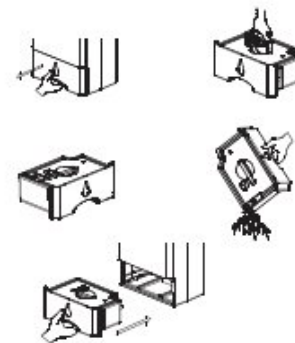
**If you wish to revert back to draining into the tank, when the unit is switched off and unplugged, simply remove the drainage hose. Pull out the tank and replace the rubber bung in the water outlet and push the water tank securely into place.**

**NB.** Please note that this appliance uses a gravity drain when on continuous drain. The hose must be directed in a downward position.

### H. HOW TO EMPTY THE WATER TANK

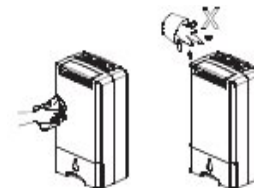
Always remove the plug from the power socket before emptying the water tank.

1. Gently pull out the water tank and lift it by the handle.
2. Open the sliding cover on the top left hand side of the tank cover.
3. Pour the water out. Clean the tank with water. A mild detergent can be used if necessary.
4. Slide back the opening and press back the handle into its original position.
5. Refit the water tank into the appliance.



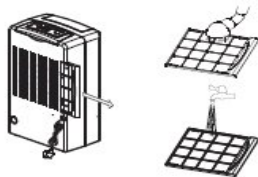
### I. MAINTENANCE

1. Turn off the unit; wait for a few minutes until the fan stops operating. Unplug from the power socket.
2. Clean the surface with a damp soft cloth.
3. Wash the water tank with a mild detergent and remove from the unit before cleaning. Do not use abrasive cleaning liquids or chemical agents (Alcohol, petrol etc.), as these will damage the unit.
4. Dry thoroughly with a clean dry cloth.



## **J. CLEANING THE AIR FILTER**

- Clean the air filter every two weeks. If dust and dirt are allowed to accumulate on the filter, this will impair the performance.
- Carefully pull out the filter screens from the unit.
- Use your vacuum cleaner hose attachment. If the filter is very dirty, it may be washed with a mild detergent in warm water.



**NOTE:** Ensure that the filter is dry before replacing. Never operate the unit without a filter, as this will reduce the efficiency of the unit.

## **K. SPECIFICATION**

**Power:** 620W max  
**Voltage:** 230V ~50Hz  
**Net Weight:** 6.5kg  
**Gross Weight:** 8.0kg

